

PIXMA iP2600

Quick Start Guide



Table of Contents

Introduction	1
How to Use the Documentation Provided	3
Preparing the Printer	4
Installing the Software	5
Reading the On-screen Manuals	7
Loading Printing Paper	8
Printing from Your Computer	9
Replacing a FINE Cartridge	11
Specifications	13

Exif Print

This printer supports Exif Print.

Exif Print is a standard for enhancing the communication between digital cameras and printers. By interacting with an Exif Print-compliant digital camera, the camera's image data at the time of shooting is used and optimized, yielding extremely high quality prints.

International ENERGY STAR® Program



As an ENERGY STAR® Partner, Canon Inc. has determined that this product meets the ENERGY STAR® guidelines for energy efficiency.

Power Requirements

Be sure to use the power cable included with the printer. Never use a power supply voltage other than that supplied in the country of purchase. Using the incorrect voltage could cause a fire or electric shock. The correct power supply voltages and frequencies are as follows:

AC 100-240 V, 50/60 Hz

About Consumables

Consumables (ink tanks / FINE Cartridges) are available for 5 years after production has stopped.

Safety Precautions

⚠ Warning

- Never attempt to plug the power cord into the power outlet or unplug the power cord when your hands are wet.
- Never damage, modify, stretch, or excessively bend or twist the power cord. Do not place heavy objects on the power cord.
- Never use any power supply other than the standard power supply available in the country of purchase. Using the incorrect voltage and frequency could cause a fire or electric shock.
- Always push the plug all the way into the power outlet.

⚠ Caution

- For safety reasons, keep FINE Cartridges out of the reach of children.
- In case ink gets in contact with eyes, rinse with water immediately.
- In case ink gets in contact with skin, wash with soap and water immediately.
- Do not drop or shake FINE Cartridges as this may cause the ink to leak out and stain your clothes and hands.

Also read the Safety Precautions in the *User's Guide* on-screen manual. Observe the warnings and cautions to avoid personal injury or damage to the printer.

Preparing the Printer

Be sure to read your setup sheet first for setting up your printer and getting it ready for use.

Unpack the printer

Please confirm the included items against the illustration printed on the lid of the packing box.

⚠ Caution

Be sure to remove the tapes and protective material before you turn on the printer.

🔑 Important

A USB cable is necessary to connect the printer with your computer.

- 1 Turn on the printer.
- 2 Prepare the FINE Cartridges.

⚠ Caution

- Do not touch internal parts other than the FINE Cartridge Holder.
- Do not drop or shake FINE Cartridges as this may cause the ink to leak out and stain your clothes and hands.

🔑 Important

- Wait until the FINE Cartridge Holder has moved to the left automatically and stop.
- Do not touch the electrical contacts or Print Head Nozzles on a FINE Cartridge. The printer may not print out properly if you touch it.
- Do not reattach the protective tape once it has been removed.
- Handle the removed protective tape carefully to avoid getting your hands dirty or staining surrounding work area.

- 3 Install the FINE Cartridges.

Be sure to use the printer with both Black and Color FINE Cartridges.

Otherwise, the printer cannot print. When either of ink runs out while printing, you can select to use either Color or Black ink as a printer driver setting. However you must use the printer with both Black and Color FINE Cartridges installed regardless of the printer driver setting.

🔑 Important

- If the Top Cover is left open for more than 10 minutes, the FINE Cartridge Holder moves to the right side. Close and reopen the Top Cover to return the holder to the left.
- Make sure that all the FINE Cartridges are installed in the correct position. The printer cannot be used unless all the FINE Cartridges are installed.
- Once you have installed the FINE Cartridges, the **Power** lamp will flash green. Wait for about one to two minutes, until the **Power** lamp stops flashing and changes to steady, non-flashing green and the printer has stopped making operating noises, before proceeding.

📖 Note

The **Alarm** lamp on the printer still flashes orange if a FINE Cartridge is not installed properly. Open the Top Cover and make sure that position of all the FINE Cartridges is appropriate.

Installing the Software

■ Information Common to Windows® and Macintosh®

Notes on the Installation Process

- If the **Select Language** screen appears, select a language, then click **Next**.
- If the **Select Your Place of Residence** screen appears, select your place of residence, then click **Next**.
- There are two ways of installing the printer driver and other software*:

Easy Install: the items included on the *Setup CD-ROM* are installed automatically

Custom Install: you can select particular items to install

* The available software programs included on the *Setup CD-ROM* may vary depending on the country or region of purchase.

- When the **User Registration** screen appears, click **Next**. If your computer is connected to the Internet, the on-screen instructions to register your product will appear.

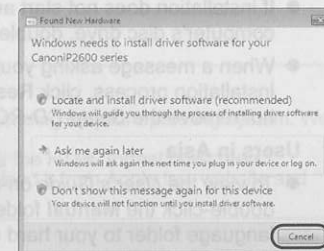
Registration can also be performed from the icon on the desktop after installation is completed.

The **User Registration** screen will only be displayed when **Europe, Middle East, Africa** is selected on the **Select Your Place of Residence** screen.

- Remove the *Setup CD-ROM* after installation is completed, then keep it in a safe place in case you need to reinstall the software.

■ Information for Windows

- Log into a user account with the administrator privilege.
- Quit all running applications before installation.
- Do not switch users during the installation process.
- If the **Found New Hardware** or **Found New Hardware Wizard** screen appears automatically, remove the USB cable connected to your computer. Click **Cancel** to quit the screen. In Windows Vista, the screen may close automatically when the USB cable is unplugged. Then turn off the printer and start the installation process again. For details on the installation process, refer to your setup sheet.
- If installation does not start automatically when the *Setup CD-ROM* is inserted into your computer's disc drive, click **Start** then **Computer**. (In Windows XP, click **Start** then **My Computer**. In Windows 2000, double-click the **My Computer** icon on the desktop.) And double-click the CD-ROM icon on the displayed window. If the contents of the CD-ROM are displayed, double-click **MSETUP4.EXE**.
- If the **AutoPlay** screen appears, click **Run Msetup4.exe**. In Windows XP and Windows 2000, this screen will not appear.
- If the **User Account Control** screen appears, click **Continue**. In Windows XP and Windows 2000, this screen will not appear.
- To install Adobe® RGB (1998), click **Custom Install** and follow the instruction on the screen.
- When a message asking for your confirmation to restart your computer may appear during the installation process, click **OK**. The system is restarted automatically. While restarting, do not remove the *Setup CD-ROM*.



- We would appreciate it if you would take part in the **PIXMA Extended Survey Program** regarding the use of Canon printers. If **Do not agree** is clicked, the **PIXMA Extended Survey Program** will not be installed but you can use the printer normally.
- If the connection is not recognized, click **Cancel** to quit the **Printer Connection** screen, then follow the on-screen instructions. When the **Easy Install** screen appears, click **Back** and then click **Exit** to cancel installation. Next turn off the printer and restart your computer. Then follow the instructions in your setup sheet to install the printer driver.

Solution Menu

- This menu screen helps you to easily launch bundled applications or on-screen manuals. Also, you can easily access useful web sites to get tips on how to use your printer. Experience how easy it is to launch menu items by using the menu screen that appears automatically when your computer starts up. For details, refer to the *Introduction to Solution Menu* on-screen manual.

My Printer

- This application helps you to operate this printer. Use this application to open the printer driver or the status monitor screen and confirm or change both the printer settings or status. Also, this application has a menu to provide troubleshooting tips when problems arise. Double-click the icon on the desktop and experience how easy operating the printer can be.

■ Information for Macintosh

- Since Mac OS 9, Mac OS X Classic environments, or Mac OS X v.10.3.8 or earlier are not supported, do not connect the printer to these. Use Mac OS X 10.3.9 or later.
- Do not remove or insert the USB cable during installation, as this may result in the computer or printer not operating normally.
- Quit all running applications before installation.
- If installation does not start automatically when the *Setup CD-ROM* is inserted into your computer's disc drive, double-click the CD-ROM icon on your desktop.
- When a message asking your confirmation to restart your computer appears during the installation process, click **Restart**. The system is restarted automatically. While restarting, do not remove the *Setup CD-ROM*.

Users in Asia

- To view the *User's Guide* on-screen manual in a language other than the installed one, double-click the **Manual** folder in the *Setup CD-ROM*, **Canon** folder, and then copy a language folder to your hard disk.

Reading the On-screen Manuals

For detailed instructions on installing the on-screen manuals, refer to your setup sheet.

You can view the on-screen manuals in the following way:

Windows

To view the on-screen manual, double-click the **XXX On-screen Manual** shortcut icon on the desktop, or click **Start > All Programs (or Programs) > Canon XXX Manual > XXX On-screen Manual** (where "XXX" is your printer's name).

System Requirements

Browser: Windows HTML Help Viewer

Note

- Microsoft® Internet Explorer 5.0 or later must be installed.
- The on-screen manual may not be displayed properly depending on your operating system or Internet Explorer version. We recommend that you keep your system up to date with Windows Update.

Macintosh

To view the on-screen manual, double-click the **XXX On-screen Manual** alias (where "XXX" is your printer's name) on the desktop.

Note

Users in Asia

If you installed the *User's Guide* from the **Manual** folder in the *Setup CD-ROM*, open the folder in which you copied the *User's Guide* and double-click **top.htm**.

System Requirements

Browser: Help Viewer

Note

- The on-screen manual may not be displayed properly depending on your operating system. We recommend that you keep your system up to date.
- We recommend using Safari as your Web browser to view the HTML format on-screen manuals. If Safari is not installed on your computer, download it from Apple Inc. website and install it.

Loading Printing Paper

Important

Always load paper in portrait orientation. Loading paper in landscape orientation can cause the paper to be jammed.

Note

If you cut plain paper to 4" x 6" / 101.6 x 152.4 mm, 5" x 7" / 127.0 x 177.8 mm, or 2.13" x 3.39" / 54.0 x 86.0 mm (credit card-size) for a trial print, it can cause paper jams.

- 1 Open the Paper Support.
- 2 Open the Paper Output Tray fully.
If it is not opened fully, an error may occur.
- 3 Extend the Output Tray Extension.
- 4 Adjust the position of the Paper Thickness Lever.

The Paper Thickness Lever switches the clearance between the Print Head and the loaded paper to match the media type.

Set it to the right when printing on envelopes or T-shirt transfers, and left when printing on any other type of paper.

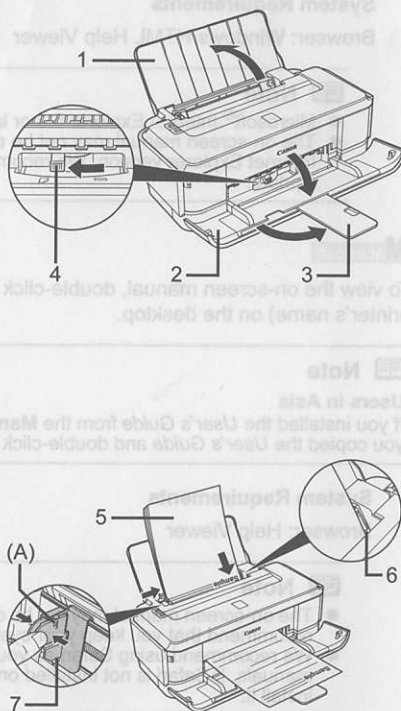
- 5 Load the paper in the Rear Tray with the print side facing UP.

Do not load higher than the Load Limit Mark (A).

- 6 Align the paper stack against the right side of the Rear Tray.

- 7 Pinch the Paper Guide and slide it against the left side of the paper stack.

Do not slide the Paper Guide too strong. Paper may not be fed properly.

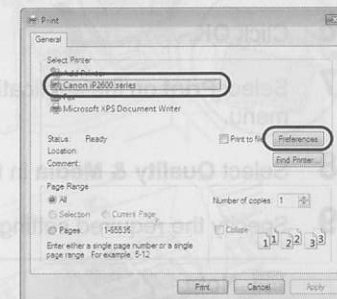


Printing from Your Computer

This section describes the procedure for basic printing.

Printing with Windows

- 1 Turn on the printer and load the paper in the printer.
- 2 Create a document or open a file to print using an appropriate application software.
- 3 Select **Print** on the application software's **File** menu.
- 4 Make sure that your printer's name is selected in **Select Printer**, and click **Preferences** (or **Properties**).



- 5 Specify the required settings and click **OK**.

Note

For details on other printer driver functions, click **Help** or **Instructions** to view the online help or the *PC Printing Guide* on-screen manual. **Instructions** is only displayed when the on-screen manuals are installed.

- 6 Click **Print** (or **OK**).




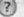
Note

If straight lines are misaligned or print quality is not satisfactory after installing the printer driver, you may need to align the Print Head. Refer to "Aligning the Print Head" in the *User's Guide* on-screen manual.

Printing with Macintosh

- 1 Turn on the printer and load the paper in the printer.
- 2 Create a document or open a file to print using an appropriate application software.
- 3 Select **Page Setup** on the application software's **File** menu.
- 4 Make sure that your printer's name is selected in **Format for**.
- 5 Select the desired paper size in **Paper Size**.
- 6 Click **OK**.
- 7 Select **Print** on the application software's **File** menu.
- 8 Select **Quality & Media** in the pop-up menu.
- 9 Specify the required settings.

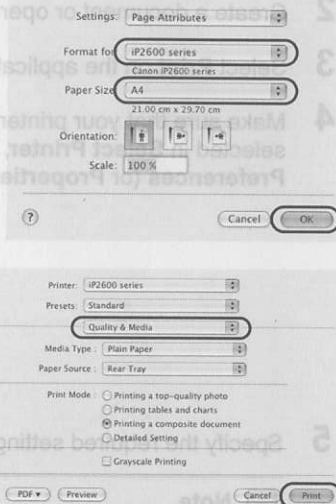
Note

For details on other printer driver functions, click  to view the *PC Printing Guide* on-screen manual. If the on-screen manuals are not installed, the *PC Printing Guide* on-screen manual is not displayed even if  is clicked.

- 10 Click **Print**.

Note

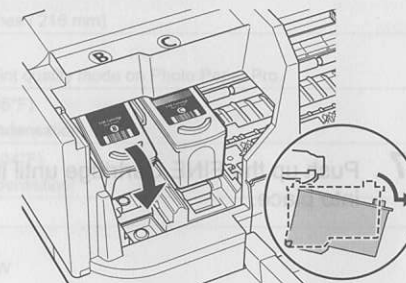
If straight lines are misaligned or print quality is not satisfactory after installing the printer driver, you may need to align the Print Head. Refer to "Aligning the Print Head" in the *User's Guide* on-screen manual.



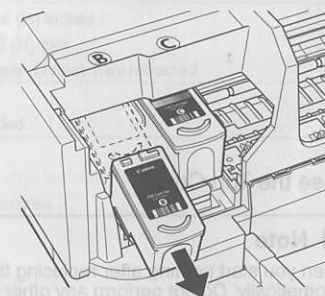
Replacing a FINE Cartridge

When FINE Cartridges run out of ink, replace them using the following steps.

- 1 Open the Paper Output Tray.
- 2 Make sure that the printer is turned on, and then open the Top Cover.
- 3 Push down the FINE Cartridge.



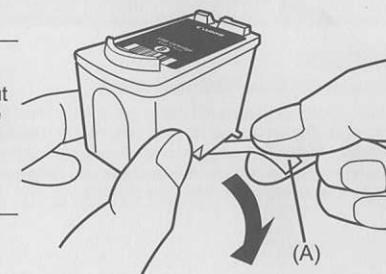
- 4 Remove the FINE Cartridge.



- 5 Unpack a new FINE Cartridge and remove the orange protective tape (A) gently.

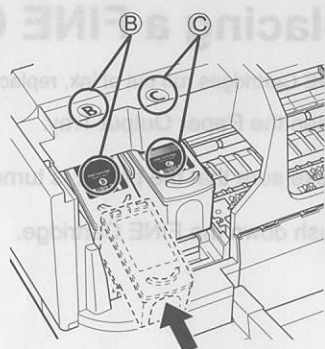
Important

- Shaking FINE Cartridges may cause ink to spill out and stain clothing or the surrounding area. Handle FINE Cartridges carefully.
- Do not touch the electrical contacts or Print Head Nozzles on a FINE Cartridge. The printer may not print out properly if you touch it.

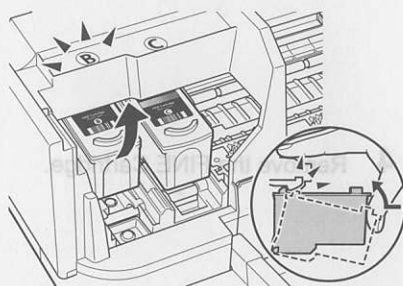


- 6** Insert a new FINE Cartridge all the way into the appropriate slot.

The Black FINE Cartridge should be installed into the left slot (B) and the Color FINE Cartridge should be into the right slot (C).



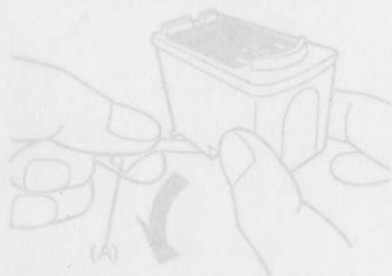
- 7** Push up the FINE Cartridge until it clicks into place.



- 8** Close the Top Cover.

Note

When you start printing after replacing the FINE Cartridge, Print Head Cleaning is performed automatically. Do not perform any other operations until Print Head Cleaning finishes. The **Power** lamp flashes green during cleaning.



Important

- Sticking FINE Cartridges may cause ink to spill out and stain clothing or the surrounding area. Handle FINE Cartridges carefully.
- Do not touch the electrical contacts or Print Head nozzles on a FINE Cartridge. The printer may not print out properly if you touch it.

Specifications

General Specifications

Printing resolution (dpi)	4800 (horizontal)* x 1200 (vertical) *Ink droplets can be placed with a pitch of 1/4800 inch at minimum.
Interface	USB
Print width	8 inches / 203.2 mm max. (for Borderless Printing: 8.5 inches / 216 mm)
Acoustic noise level	Approx. 43 dB (A) *When printing in the highest print quality mode on Photo Paper Pro.
Operating environment	Temperature: 5 to 35°C (41 to 95°F) Humidity: 10 to 90% RH (no condensation)
Storage environment	Temperature: 0 to 40°C (32 to 104°F) Humidity: 5 to 95% RH (no condensation)
Power supply	AC 100-240 V, 50/60 Hz
Power consumption	Printing: Approx. 7 W Standby (minimum): Approx. 1 W OFF: Approx. 0.6 W
External dimensions	Approx. 17.4 (W) x 10.0 (D) x 5.6 (H) inches / Approx. 442 (W) x 253 (D) x 142 (H) mm *With the Paper Support and Paper Output Tray retracted.
Weight	Approx. 3.7 kg (Approx. 8.0 lb.) *With the FINE Cartridges installed.
Canon FINE Cartridges	Nozzles: Black: 320 nozzles Cyan/Magenta/Yellow: 384 x 3 nozzles

Minimum System Requirements

Note

Conform to the operating system's requirements when higher than those given here.

	Windows	Macintosh
Operating System	Windows Vista	Mac OS X v.10.4
Processor	Pentium II (including compatible processors)	Intel processor
RAM	300 MHz 128 MB	PowerPC G3 256 MB
	Windows XP SP2	Mac OS X v10.3.9
	Pentium II (including compatible processors)	PowerPC G3
	300 MHz 128 MB	128 MB
	Windows 2000 Professional SP4	Note: Hard Disk must be formatted as Mac OS Extended (Journaled) or Mac OS Extended.
	Pentium II (including compatible processors)	
	300 MHz 128 MB	
	Note: Operation can only be guaranteed on a PC pre-installed Windows Vista, XP or 2000.	
Browser	Internet Explorer 6.0 or later	Safari
Hard Disk Space	400 MB Note: For bundled software installation.	450 MB Note: For bundled software installation.
CD-ROM Drive	Required	
Other restrictions	SVGA 800 x 600	

- To upgrade from Windows XP to Windows Vista, first uninstall software bundled with the Canon inkjet printer.

Additional System Requirements for On-Screen Manuals

Windows

Browser: Windows HTML Help Viewer

Note: Microsoft Internet Explorer 5.0 or later must be installed. The on-screen manual may not be displayed properly depending on your operating system or Internet Explorer version. We recommend that you keep your system up to date with Windows Update.

Macintosh

Browser: Help Viewer

Note: The on-screen manual may not be displayed properly depending on your operating system or Help Viewer version. We recommend that you keep your system up to date with Software Update.